

Service Bulletin

Subject: Mag Timing Housing- Dowel Pin

Date: 02/23/2017

This is information only. Recommendations aren't mandatory.

Introduction

This Service Bulletin informs owners and operators of aircraft equipped with Electroair 6-cylinder Mag Timing Housings (MTH), Part numbers EA-10000 or EA-12000, approved under Supplemental Type Certificate SA03286CH.

At this time, the airworthiness concern is not an unsafe condition that would warrant airworthiness directive (AD) action under Title 14 of the Code of Federal Regulations (14 CFR) part 39.

Background

Electroair has received reports of the 6-cylinder Mag Timing Housing (MTH) malfunctioning. The malfunction may cause the trigger wheel within the MTH to become loose due to a dowel pin withdrawing from its designed position. If this happens, the electronic ignition system may not function correctly. The engine timing from the electronic ignition system may slip, and the engine may run rougher than normal. A pilot may notice either a rough running engine, or may notice slightly elevated or slightly decrease cylinder head temperatures.

If engine roughness in flight is encountered, the correct pilot response is to perform an ignition check (Switch from left, right, both ignition sources, and determine if one position is running rougher than normal). Identify the faulty ignition and turn it off. Then follow the Aircraft Flight Manual procedures for single ignition operation.

Electroair has established a method to modify the EA-10000 and EA-12000 in order to prevent the dowel pin from becoming loose.

To comply with this service bulletin, first check the serial number on the electronic ignition unit:

Serial Numbers begin with a two-digit year of manufacture. If the two digit code is year 17-(XXX)-(XXX) or higher, then your system is not affected, and you should make note in the aircraft logbook that the service bulletin is not applicable by serial number. No further action is necessary.

If your serial number is LESS than 17-(XXX)-(XXX), and is listed here, then your system may be affected, and you should continue complying with this bulletin as follows:

Serial Numbers Affected

EA-10000

14-161-(XXX)
14-173-(XXX)
15-019-(XXX)
15-046-(XXX)
15-081-(XXX)
15-084-(XXX)
15-103-(XXX)
16-068-(XXX)
16-093-(XXX)

EA-12000

16-025-(XXX)

The above serial numbers may have not been modified, and should be further inspected as follows:

Recommendations

Owners and operators of aircraft equipped with the referenced EA-10000 or EA-12000 6-cylinder Mag Timing Housings (MTH) can inspect the MTH to see if it has already been modified. To check for the modification, first remove the bottom cover of the MTH unit. Use caution with the screws, because those are brass screws which can easily be cross threaded. Once the cover has been removed, simply visually inspect the top of the trigger wheel. If you see a large washer under a smaller washer and screw, then the MTH unit already has been modified (Figure 1). If you see only a small washer and the dowel pin, then the MTH has not been modified (Figure 2).

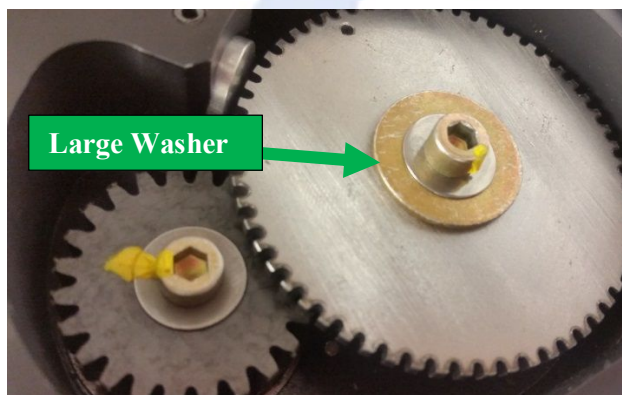


Figure 1: Modified MTH

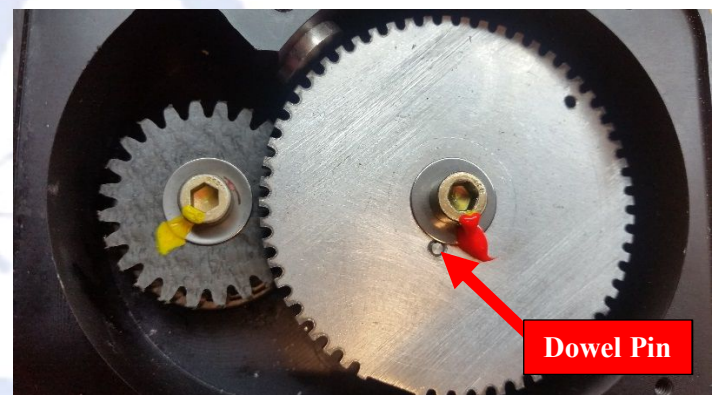


Figure 2: MTH without Modification

If your unit (Figure 2) contains only a small washer, and you can see the dowel pin, then your unit should be returned to Electroair for service and modification.

Electroair recommends that owners and operators of aircraft equipped with the referenced EA-10000 or EA-12000 6-cylinder Mag Timing housings without the



327 Catrell Drive
Howell, MI 48843

517-552-9390; Fax: 517-552-9391
Email: sales@electroair.net

modification, contact Electroair to get assistance with the necessary steps for having the EA-10000 or EA-12000 modified.

Electroair Contact Information

327 Catrell Drive
Howell, MI 48843
Phone: (517) 552-9390
Fax: (517) 552-9391
Website: <http://www.electroair.net/>
Email: techsupport@electroair.net

What Electroair will do: Affected serial number Mag Timing Housing (MTH) unit owners should contact Electroair and schedule the modification. Units that have NOT been modified with the larger washer may be returned to Electroair for modification/alteration to be configured into the latest design. There will be no charge for this modification.

Note: Once the modification is done at Electroair, the ID plate will be marked with "Rev 2".

The modified unit will be returned to the owner, and may then be reinstalled by a properly certified mechanic, and a logbook entry should be made showing compliance with this service bulletin.